



Alphacap Release Notes

Autumn 2008

Alphacap software may not be copied, photocopied, reproduced, translated, or reduced to any electronic medium or machine-readable form, in whole or in part, without the express written permission of:

Tax Computer Systems Limited
Centurion House
London Road
Staines TW18 4AX

Tel: +44 (0) 1784 410369
Fax: +44 (0) 1784 410335

Email: support@taxcomputersystems.com
Web: www.taxcomputersystems.com

Autumn 2008
Copyright © 1991–2008 Tax Computer Systems Limited
All rights reserved
Alphacap is a trademark of Tax Computer Systems Limited.

Contents

- Introduction 4
- Installation 4
- Capital allowance regime changes..... 6
- Splitting assets 6
- Report Designer 7
- Report Viewer 8
- Miscellaneous enhancements..... 8

Introduction

Welcome to the Alphacap Autumn 2008 edition. This release includes:

- Capital allowance changes introduced by FA 2008
- The ability to create a new asset by splitting lines of expenditure in an existing asset into a new one
- Additional SQL templates and enhancements to the Report Viewer

Installation

To update your existing version of Alphacap, insert the Installation CD and press the enter key at the prompts. This will overwrite previous versions of Alphacap. You must also update the Alphacap database using the Enterprise Manager before running Alphacap. If not, an error message will be displayed when you open Alphacap.

Templates

The installation will reinstall the standard Alphacap templates to ensure that you have the latest versions.

To allow you to retrieve your own versions of these templates, if applicable, the old templates are stored in a new folder called BACKUPI_n (where n is a number incremented for each new installation). Note that this part of the process may take some time.

Folders called BACKUPH_n created in the Spring 2008 release are removed with this release.

To update the database, open Enterprise Manager and:

1. Double-click the **System Administration** item in the Contents tree.
2. Double-click the **Update Alphacap Database** item.
3. Connect to the database for SQL Server or Oracle as appropriate.

The **Database** drop-down list is a list of all the Alphatax databases on the selected server. The corresponding **Status** gives the version number of the database. For Autumn 2008, the version number is 6. You **must** apply the upgrade if the Status shows a version number earlier than 6.

4. Choose **Upgrade Now** for Enterprise Manager to upgrade the database. (For further details refer the Enterprise Manager Administrator Guide which is located in the Manuals folder on the installation CD.)

Capital allowance regime changes

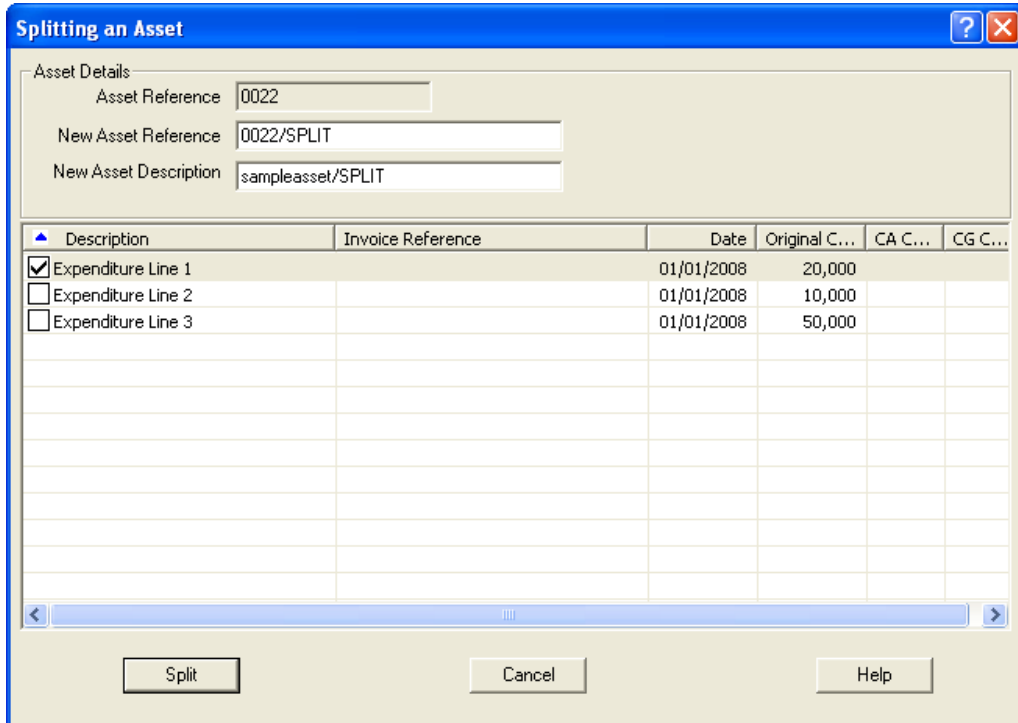
- 40% and 50% FYA capital allowance categorisation options have been removed for expenditure incurred on or after 1 April 2008 in accordance with the abolition of first year allowances for expenditure incurred on or after 1 April 2008 under FA 2008 s75
- A new special rate pool category is now available for expenditure incurred on or after 1 April 2008. Long life assets expenditure now falls under the new Special rate pool, therefore this category has been removed
- It is now possible to set different trade and non-trade default capital allowance categories for expenditure in the batch input area
- A new capital allowance category for 100% FYA's claimed on energy saving assets has been introduced for expenditure incurred on or after 1 April 2008. When selected, this will correctly complete the computation and ensure that box 119 is flagged in the relevant CT600 return when posted to Alphatax
- 24% FYAs are available for long life asset expenditure incurred before 12 March 2008 in ring fence trades. This allowance becomes 100% for expenditure incurred on or after 12 March 2008. Both categories are now available

Splitting assets

In response to user feedback, Alphacap has been enhanced with a new tool to assist with the disposal of individual lines of expenditure where they were originally set up as part of a larger asset. It is now possible to create a new asset by splitting lines of expenditure in an existing asset into a new one. In the Working area section of the Contents tree at any heading below and including the Asset details statement, you can choose Split asset from the right mouse click menu.

By default the New Asset Reference and New Asset Description fields will show the existing name and description with /SPLIT appended. You can amend these as required.

Select one or more lines of expenditure to split into the new asset.



Report Designer

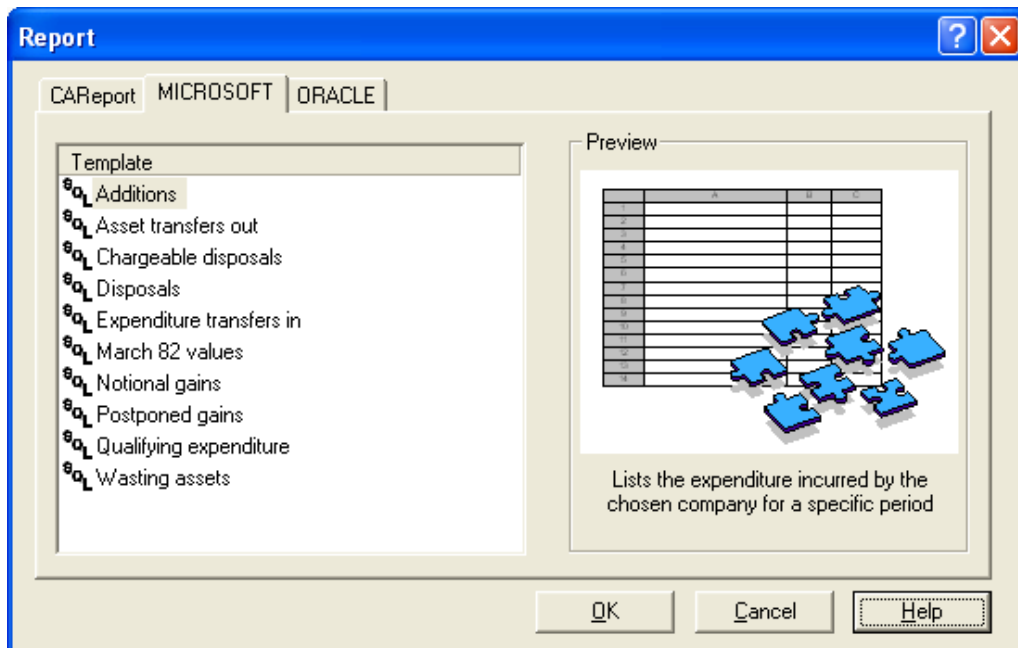
SQL report templates

The following SQL report templates have been added to the Report Designer:

- Asset transfers out
- Disposals
- Expenditure transfers in
- Qualifying expenditure

These reports can be run from the **File, Print, Custom report** or **File. Print Preview, Report** menu option which opens the following dialog.

Choose the Microsoft or Oracle tab as appropriate for your installation.



Report Viewer

The Report Viewer has been enhanced to allow conditional formatting for selected columns or entire rows within a report.

You can specify that the report be broken down into a number of sub-reports. Sub-reports are triggered when there is new value for a selected column or columns – e.g. Company or Period. Each sub report begins on a new page. Where a report includes columns that sum, totals will be given for each sub-report with a summary of all sub-report totals at the end of the report.

Miscellaneous enhancements

- Performance has been improved for the dataset process
- Document Manager has been enhanced to handle Lotus Notes Document Link (.NDL) files so that double-clicking on a .NDL file will now automatically launch Lotus Notes