



# Alphacap Release Notes

## Spring 2008

---

Alphacap software may not be copied, photocopied, reproduced, translated, or reduced to any electronic medium or machine-readable form, in whole or in part, without the express written permission of:

Tax Computer Systems Limited  
Centurion House  
London Road  
Staines TW18 4AX

Tel: +44 (0) 1784 410369  
Fax: +44 (0) 1784 410335

Email: [support@taxcomputersystems.com](mailto:support@taxcomputersystems.com)  
Web: [www.taxcomputersystems.com](http://www.taxcomputersystems.com)

Spring 2008  
Copyright © 1991–2008 Tax Computer Systems Limited  
All rights reserved  
Alphacap is a trademark of Tax Computer Systems Limited.

# Contents

Introduction ..... 4  
Installation ..... 4  
Capital allowance regime changes..... 6  
Report Designer ..... 6  
Miscellaneous enhancements..... 8

## **Introduction**

Welcome to the Alphacap Spring 2008 edition. This release includes:

- Changes to the capital allowance regime effective 1 April 2008
- Improved report layout and printing of Report Designer reports using the new Report Viewer interface. This also enables data to be exported directly to Excel
- A new Quick Sum feature displays the sum of selected cells in the Status bar at the foot of the Alphacap desktop

## **Installation**

To update your existing version of Alphacap, insert the Alphacap Installation CD and press the enter key at the prompts. This will overwrite the old version of Alphacap. You must also update the Alphacap database using the Enterprise Manager before running Alphacap. If not, an error message is displayed when you open Alphacap.

## **Templates**

The installation will reinstall the standard Alphacap templates to ensure that you have the latest version.

To allow you to retrieve your own versions of these templates, if applicable, the old templates are stored in a new folder called BACKUPHn (where n is a number incremented for each new installation). Note that this part of the process may take some time.

Folders called BACKUP1n created in the Autumn 2007 release are removed with this release.

To update the database, open Enterprise Manager and:

1. Double-click the **System Administration** item in the Contents tree.
2. Double-click the **Update Alphacap Database** item.
3. Connect to the database for SQL Server or Oracle as appropriate.

The **Database** drop-down list is a list of all the Alphatax databases on the selected server. The corresponding **Status** gives the version number of the database. For Spring 2008, the version number is 5 You **must** apply the upgrade if the Status shows a version number earlier than 5.

4. Choose **Upgrade Now** for Enterprise Manager to upgrade the database. (For further details refer the Enterprise Manager Administrator Guide which is located in the Manuals folder on the installation CD.)

### **SQL server users only**

For MS SQL server users only, you will be prompted to back up the database if you have not already done so.

The system will also prompt users to amend the tcsldb.ini file with the newly created database details if required. Select **Yes** to automatically update the tcsldb.ini file.

For further details refer to the Enterprise Manager Administrator Guide which is located in the Manuals folder on the installation CD.

## Capital allowance regime changes

Alphacap has been updated to reflect some of the capital allowances changes in Finance Bill 2008. In particular, the following has changed:

- For expenditure incurred on or after 1 April 2008, the Special rate pool has been introduced as an available capital allowance category
- Due to the changing capital allowance rates and hybrid rates in transitional periods, you should also note that capital allowance categories (displayed in drop-down lists) now only show the category name and do not refer to a rate

For further details on the Capital allowance regime changes refer to the Alphatax UK Spring 2008 Release Notes.

## Report Designer

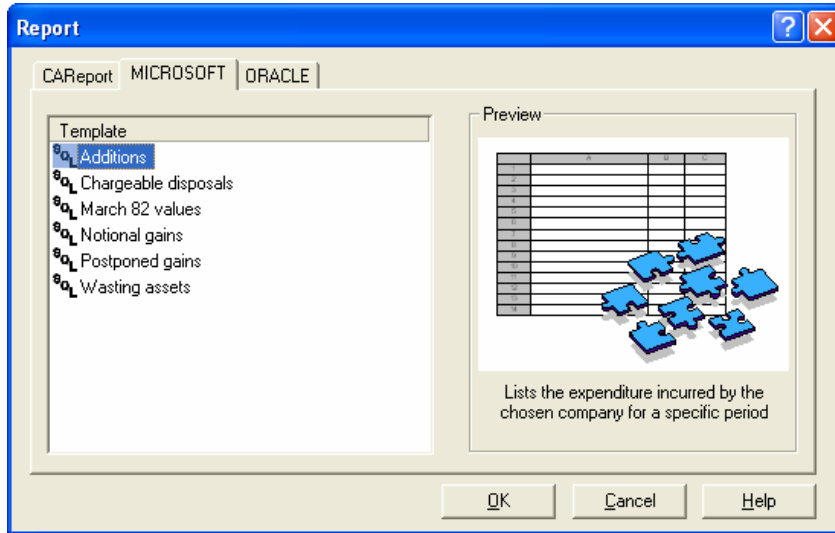
### SQL report templates

A range of SQL report templates is now available from the Report Designer:

- Additions. Lists the expenditure incurred by a specified company within a specified period
- Chargeable disposals. Lists the chargeable disposals made by a specified company within a specified period
- Notional gains. Lists the notional gains on assets not yet disposed of, for a specified company
- Postponed gains. Lists gains crystallising in a specified company within a specified period
- March 82 values. Lists the March 1982 values of assets held by a specified company
- Wasting assets. Lists all wasting assets in a specified company which are due to expire within a specified period

These reports can be run from the **File, Print, Custom report** or **File. Print Preview, Report** menu option which opens the following dialog.

Choose the Microsoft or Oracle tab as appropriate for your installation.



### Report Viewer

A new Report Viewer facility is available that enables users to manipulate the layout of Alphatax reports. The Report Viewer is enabled via the **EnableReportViewer** setting in the [SYSTEM] section of the tcsbase.ini file.

- Users can hide rows or columns, adjust column width, filter report contents and save filter settings and sort the report and reorder the display as required
- Formatting options enable users to define the format for the report as a whole, as well as for selected columns. The title row and the headers and footers of reports are formatted independently
- The current format settings for a particular report can be saved and re-used
- Multiple reports can be open in different panes for comparison purposes
- All reports can be exported to Excel

### Miscellaneous enhancements

- A new Quick Sum feature has been enabled for the Status bar at the foot of the Alphatax desktop. This now shows the total amount for selected cells in the current Input statement, Report statement or Summary view